

ERRORS AND SOLUTIONS

Linux user:

Important Note:

To execute the **sudo** commands in the terminal, you need to be given super user permission by your system administrator. Otherwise you may get error.

Go through the information given below if you get an error as shown:

Error Message 1 :

**Avrdude: ser_open(): can't open device "/dev/ttyACM0": Permission denied
An error occurred while uploading the sketch.**

Solution:

Option 1

1. Open the Terminal by pressing **Ctrl + Alt + T**
2. In the terminal, type **ls /dev/ttyACM***. You will see an output as **/dev/ttyACM0**. Here **/dev/ttyACM0** is the port number of Arduino and it changes every time. We have to give permissions to the port number by following the next step
3. Type **sudo chmod a+rw /dev/ttyACM0** and press Enter. Type the password when prompted and press enter
4. You will need to log out and log in again for this change to take effect
5. Now open the **Arduino IDE** and upload the code again. It will work without any error.

Option 2

1. Open the Terminal by pressing **Ctrl + Alt + T**
2. In the terminal, type **sudo usermod -a -G dialout \$USER**
3. Type, **Grep 'dialout' /etc/groupk**

4. You will need to log out and log in again for this change to take effect
5. Now open the **Arduino IDE** and upload the code again. It will work without any error now

Error Message 2 :

"Error opening serial port COM1: Port not found"

Solution:

Option1:

1. In the **Arduino IDE** menu bar, select the menu "**Tools**".
2. Select **Port** from the dropdown menu and it will open a menu with other options.
3. From that menu, select the **Arduino** which is connected to the computer.
4. Close the menu and upload the code again.

Windows user:

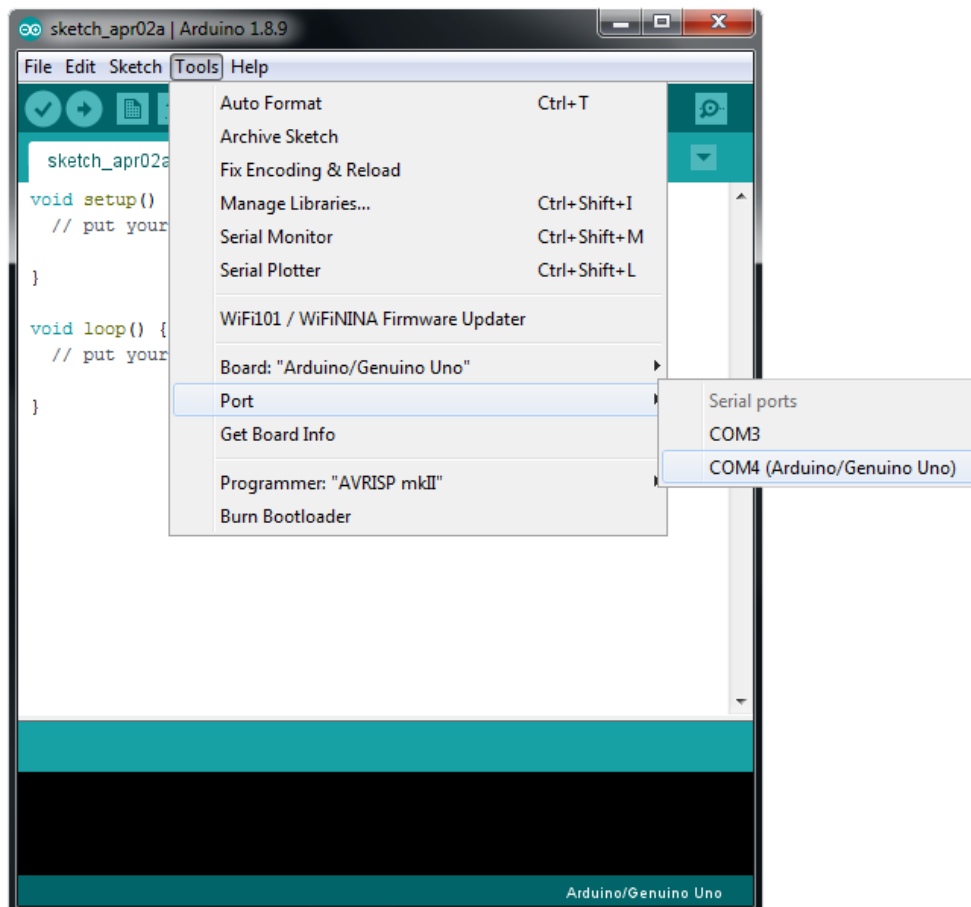
Error Message 1 :

"Error opening serial port COM1: Port not found"

Solution:

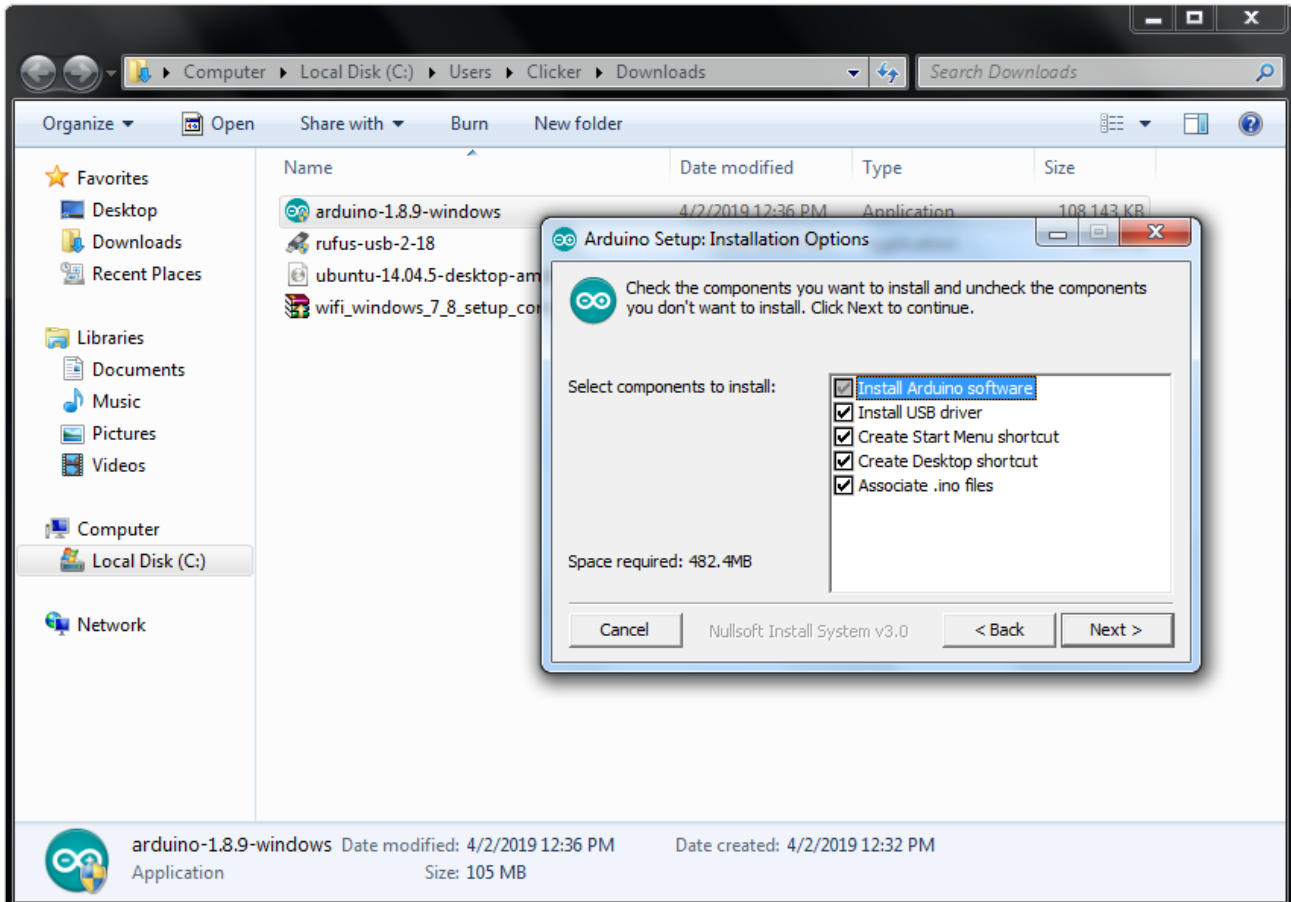
Option1:

1. In the **Arduino IDE** menu bar, select the menu "**Tools**".
2. Select **Port** from the dropdown menu and select the **Arduino** which is connected to the computer.

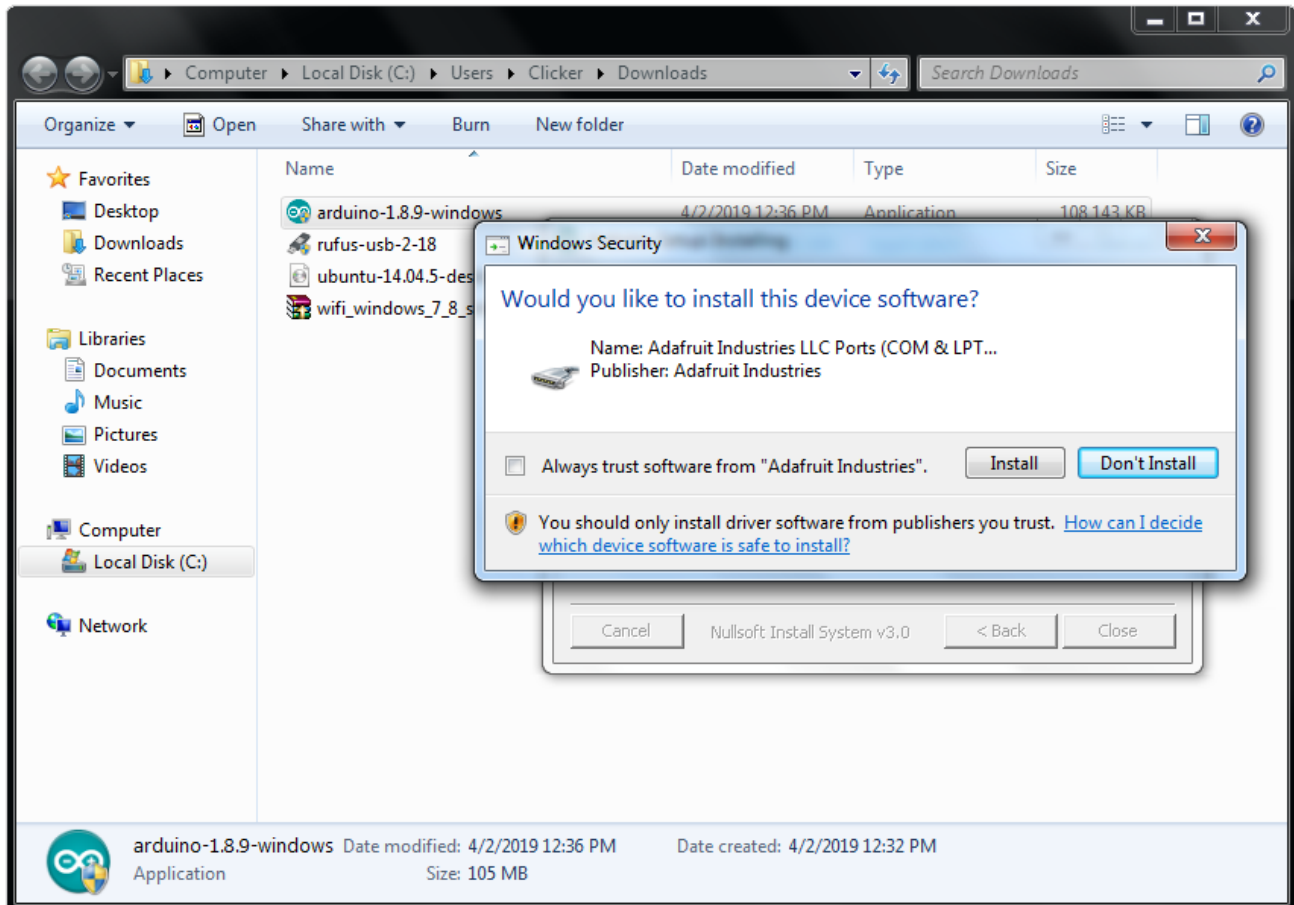


If the **Arduino** name is not shown in the **Port** menu, then do the below steps.

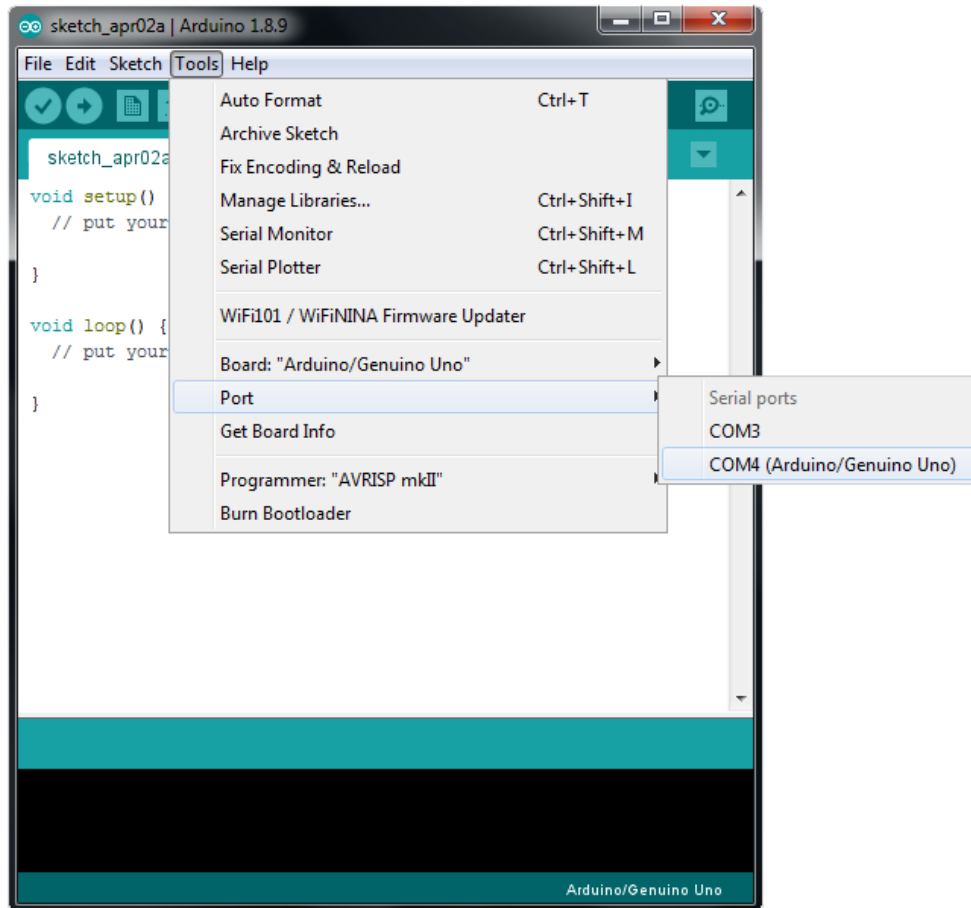
1. You need to install the device software while installing **Arduino IDE** by clicking on **windows installer** link from www.arduino.cc. Select the components to Install as shown in the image below:



2. **Install** the device software as shown in the image below:



3. Follow the below steps to set the port:



Option2:

1. There might be loose connection while connecting the Arduino kit to USB port of the computer through USB cable.
2. Remove the cable and connect it properly.