

Creating Flowcharts

Spoken Tutorial Project

<https://spoken-tutorial.org>

National Mission on Education through ICT

<http://sakshat.ac.in>

Script: Nikita Misal

Video: Madhuri Ganapathi

IIT Bombay

28 April 2021



Learning Objectives

In this tutorial, you will learn to:



Learning Objectives

In this tutorial, you will learn to:

► **Draw Flowcharts**



Learning Objectives

In this tutorial, you will learn to:

- ▶ **Draw** Flowcharts
- ▶ **Connect** Flowcharts **using** Connectors **and** Glue points



System Requirements

This tutorial is recorded using



System Requirements

This tutorial is recorded using

► Ubuntu Linux OS version 18.04



System Requirements

This tutorial is recorded using

- ▶ **Ubuntu Linux OS version 18.04**
- ▶ **LibreOffice Suite version 6.3.5**



Prerequisites

- ▶ To practise this tutorial, you should have basic knowledge of LibreOffice Draw

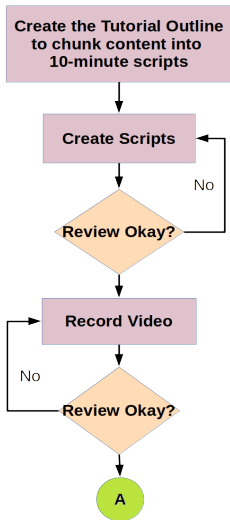


Prerequisites

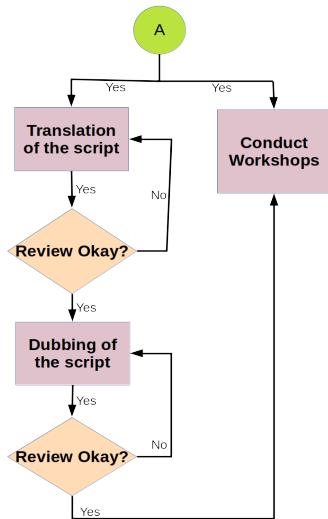
- ▶ To practise this tutorial, you should have basic knowledge of LibreOffice Draw
- ▶ If not, for relevant tutorials please visit this website
<https://spoken-tutorial.org>



Flowchart



Flowchart



Connectors



Connectors

- ▶ **Connectors are lines or arrows whose ends are docked to an object**



Glue Points



Glue Points

- ▶ Glue points **are the points that glue the connectors to the objects**



Glue Points

- ▶ Glue points **are the points that glue the connectors to the objects**
- ▶ **All** objects **have** glue points, **but they are invisible**



Glue Points



Glue Points

- ▶ They become visible when a connector is selected from the Drawing toolbar



Glue Points

- ▶ They become visible when a connector is selected from the Drawing toolbar
- ▶ When the mouse pointer is moved over an object



Glue Points



Glue Points

- ▶ Glue points **are not the same as** handles



Glue Points

- ▶ Glue points **are not the same as** handles
- ▶ **We use handles to resize an** object



Glue Points

- ▶ Glue points **are not the same as handles**
- ▶ **We use handles to resize an object**
- ▶ **Whereas Glue points are used to glue the connector to an object**



Connectors and Arrows



Connectors and Arrows

- ▶ In connectors, **end points are automatically docked to the glue points of an object**



Connectors and Arrows

- ▶ In connectors, end points are **automatically** docked to the glue points **of an** object
- ▶ Lines and Arrows **on the other hand do not dock automatically**



Summary

In this tutorial, you have learnt to:

- ▶ **Draw** Flowcharts
- ▶ **Connect** Flowcharts **using** Connectors **and** Glue points

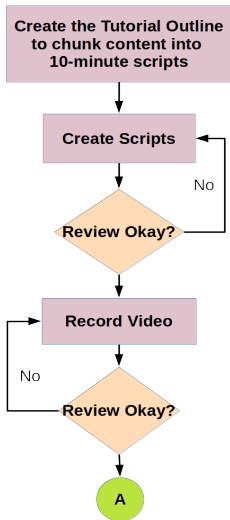


Assignment

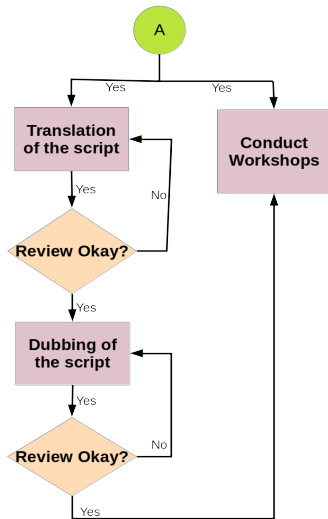
- ▶ **Create the second part of the Spoken Tutorial flow chart**
- ▶ **Colour the process boxes and decision boxes**
- ▶ **Draw a connector with the letter A**
- ▶ **It should be the first object in this flowchart**



Flowchart



Flowchart



About Spoken Tutorial project

- ▶ Watch the video available at https://spoken-tutorial.org/What_is_a_Spoken_Tutorial
- ▶ It summarises the Spoken Tutorial project
- ▶ If you do not have good bandwidth, you can download and watch it



Spoken Tutorial Workshops

The Spoken Tutorial Project Team

- ▶ Conducts workshops using spoken tutorials
- ▶ Gives certificates to those who pass an online test
- ▶ For more details, please write to contact@spoken-tutorial.org



Answers for THIS Spoken Tutorial

- ▶ **Questions in THIS Spoken Tutorial?**
- ▶ **Visit**
<https://forums.spoken-tutorial.org>
- ▶ **Choose the minute and second where you have the question**
- ▶ **Explain your question briefly**
- ▶ **The Spoken Tutorial project will ensure an answer**

You will have to register to ask questions



Acknowledgements

- ▶ **Spoken Tutorial project is funded by the Ministry of Education (MoE), Govt. of India**



About the Contributor

- ▶ This tutorial was originally contributed by **DesiCrew Solutions Pvt.Ltd.** in 2011
- ▶ www.desicrew.in
- ▶ Thank you for joining

